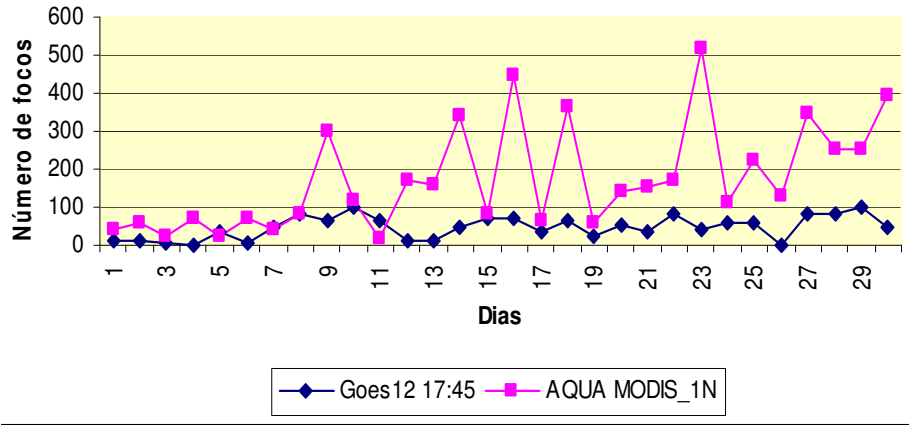


Comparação da detecção de focos para os 30 dias de Junho/2004 para todo o Brasil.

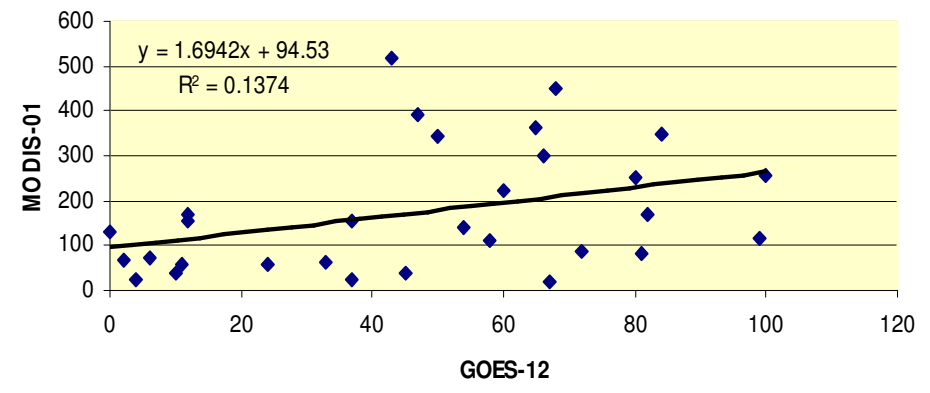
Comparison of multi-satellite fire detection for the 30 days of 2004_June for Brazil

Comparação da detecção de focos para o Brasil em junho/2004						
Dia	Goes12 17:45	AQUA MODIS_11	Goes12 17:45	AQUA MMODIS	Goes12 20:45	Noaa12 Tarde
1	10	40	10	2	22	237
2	11	58	11	0	11	278
3	4	26	4	71	10	103
4	2	68	2	311	34	152
5	37	24	37	272	19	391
6	6	73	6	253	12	360
7	45	39	45	866	48	285
8	81	80	81	2	102	175
9	66	298	66	88	90	548
10	99	117	99	68	78	771
11	67	18	67	2	73	327
12	12	168	12	342	69	277
13	12	157	12	342	23	211
14	50	342	50	1	65	828
15	72	85	72	22	86	559
16	68	450	68	668	65	218
17	33	65	33	107	59	550
18	65	364	65	9	84	978
19	24	60	24	84	34	171
20	54	141	54	266	69	133
21	37	155	37	556	55	430
22	82	168	82	6	72	993
23	43	517	43	2	89	580
24	58	113	58	1	78	240
25	60	221	60	101	61	320
26	0	132	0	250	121	1131
27	84	346	84	1	50	383
28	80	251	80	431	79	217
29	100	255	100	2	103	661
30	47	392	47	702	71	1074

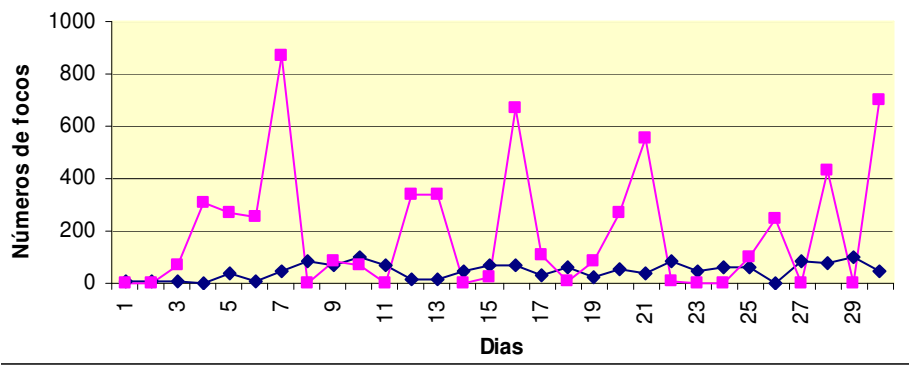
Comparação de queimadas entre GOES-12 e MODIS-01



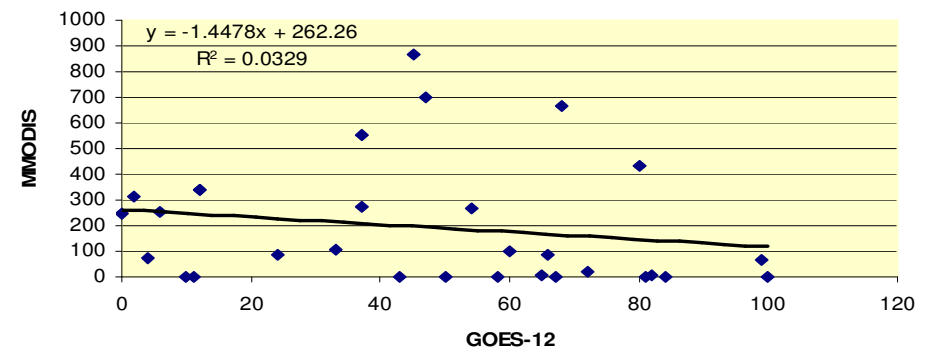
Comparação de queimadas entre GOES-12 e MODIS-01



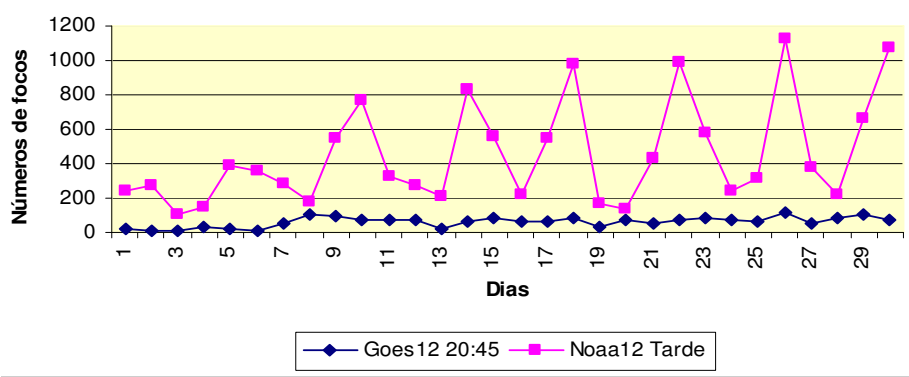
Comparação de queimadas entre GOES-12 e MMODIS



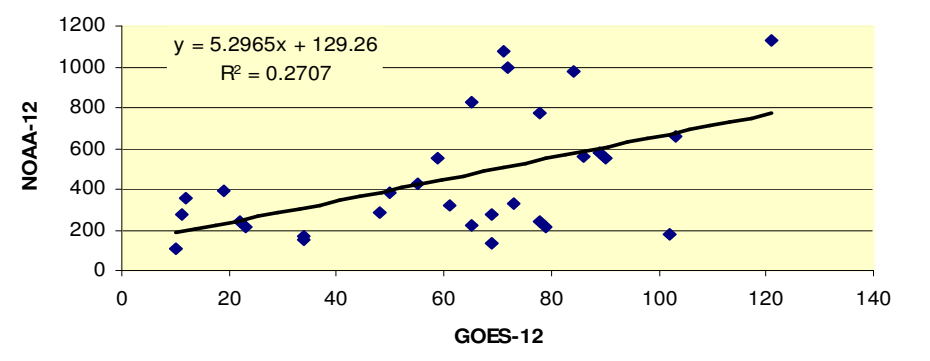
Comparação de queimadas entre GOES-12 e MMODIS



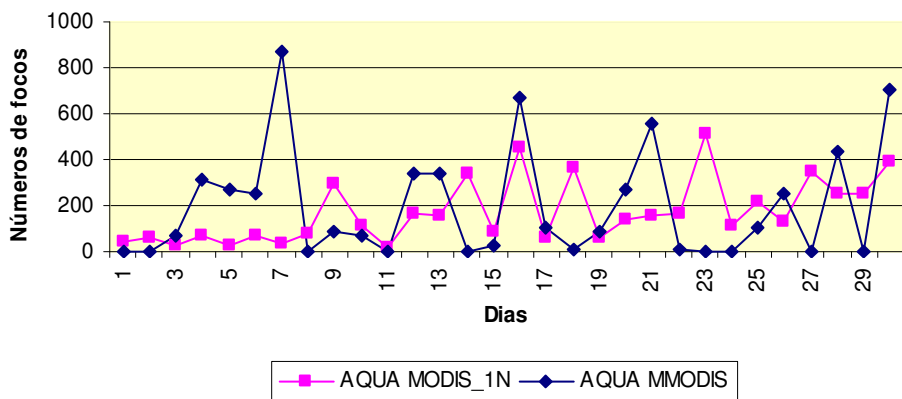
Comparação de queimadas entre GOES-12 e NOAA-12



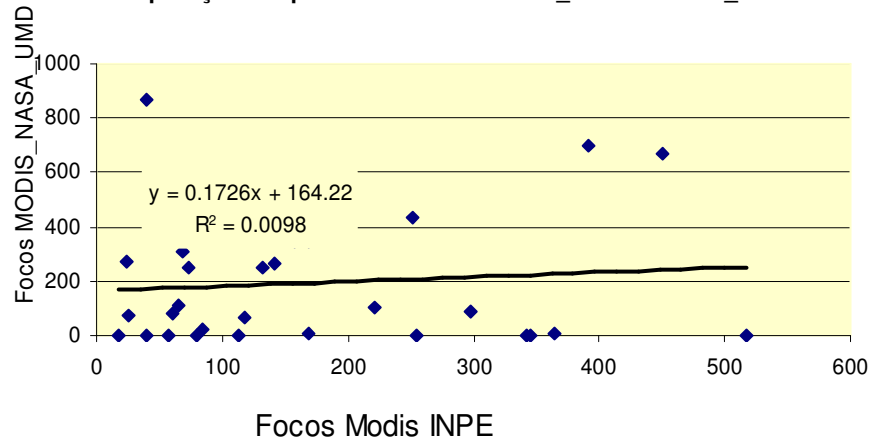
Comparação de queimadas entre GOES-12 e NOAA-12



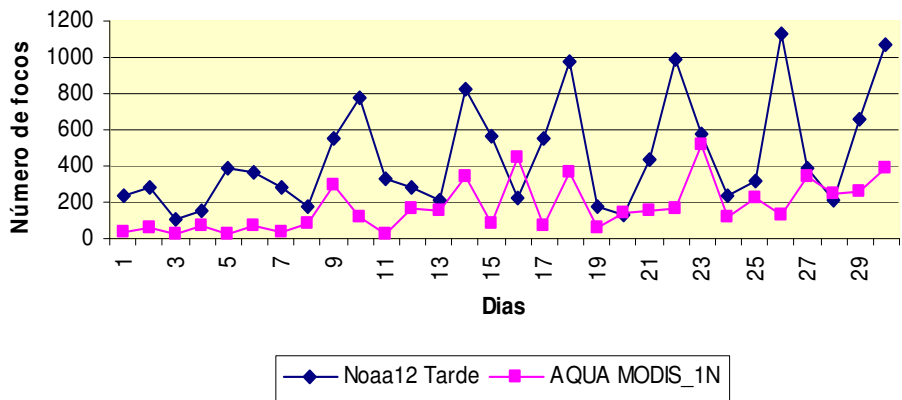
Comparação de queimadas entre MODIS_INPE e MODIS_NASA



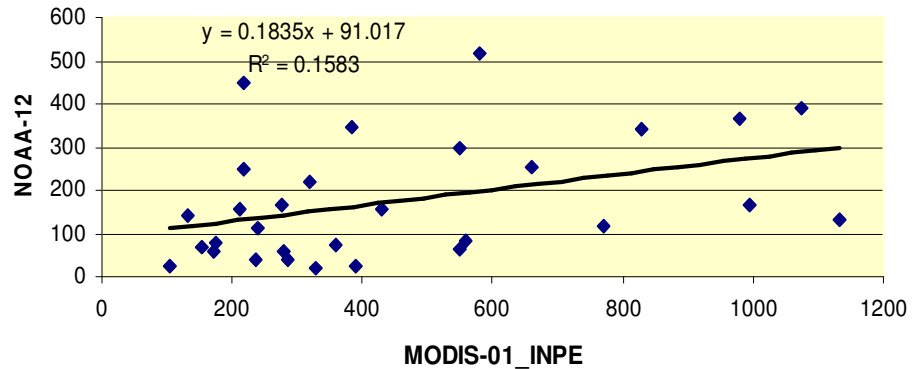
Comparação de queimadas entre MODIS_INPE e MODIS_NASA



Comparação de focos entre NOAA-12 e MODIS-01_INPE



Comparação de focos entre NOAA-12 e MODIS-01_INPE



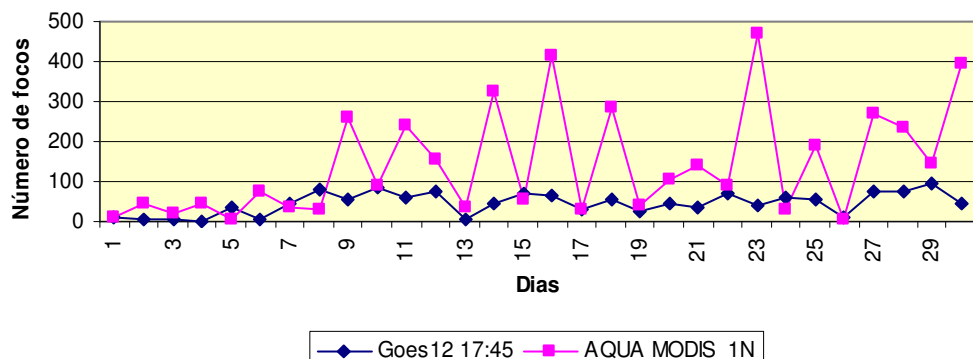
Comparação da detecção multi-satelital para os 30 dias de Junho/2004 no estado de Mato Grosso

Comparison of multi-satellite fire detection for the 30 days of 2004_June only for the state of Mato Grosso

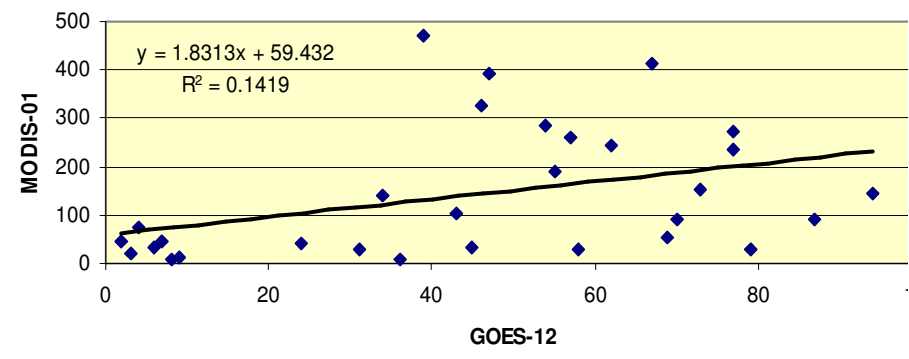
Comparação da detecção de focos para o Mato Grosso em junho/2004

Dia	Goes12	AQUA	Goes12	AQUA	Goes12	NOAA-12
	17:45	MODIS_1M	17:45	MMODIS	20:45	Tarde
1	9	11	9	1	22	234
2	7	45	7	0	11	260
3	3	19	3	66	10	38
4	2	47	2	236	33	106
5	36	7	36	1	17	369
6	4	73	4	121	12	259
7	45	35	45	833	44	187
8	79	30	79	15	93	106
9	57	261	57	24	87	529
10	87	92	87	66	69	678
11	62	242	62	482	71	185
12	73	154	73	58	66	130
13	6	35	6	115	21	176
14	46	326	46	571	61	744
15	69	55	69	19	83	402
16	67	413	67	634	60	145
17	31	28	31	12	48	499
18	54	287	54	571	78	847
19	24	41	24	68	33	106
20	43	104	43	228	64	92
21	34	141	34	265	48	375
22	70	91	70	4	63	852
23	39	472	39	925	79	379
24	58	28	58	13	72	101
25	55	192	55	34	57	277
26	8	7	8	417	118	1116
27	77	271	77	527	45	278
28	77	234	77	407	76	132
29	94	145	94	254	95	568
30	47	393	47	702	71	1074

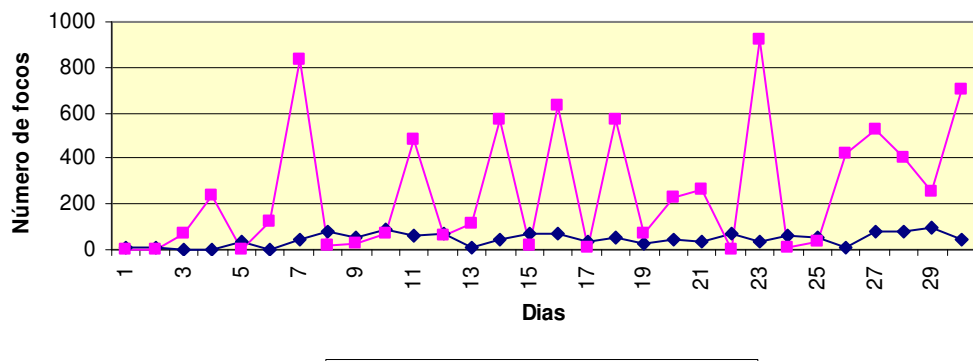
Comparação de queimadas no Mato Grosso entre GOES-12 e MODIS-01



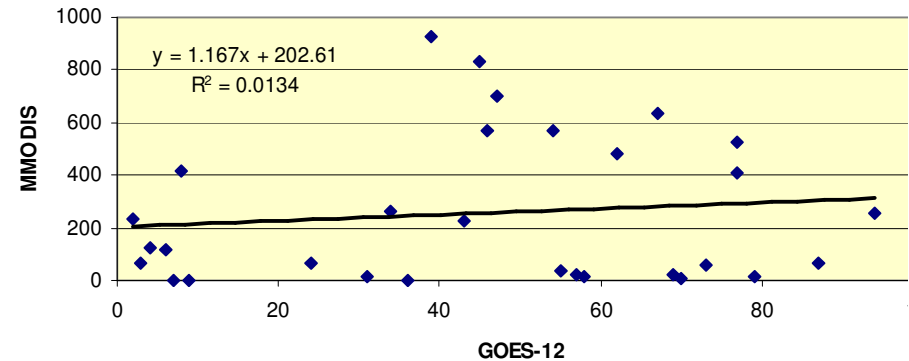
Comparação de queimadas no Mato Grosso entre GOES-12 e MODIS-01



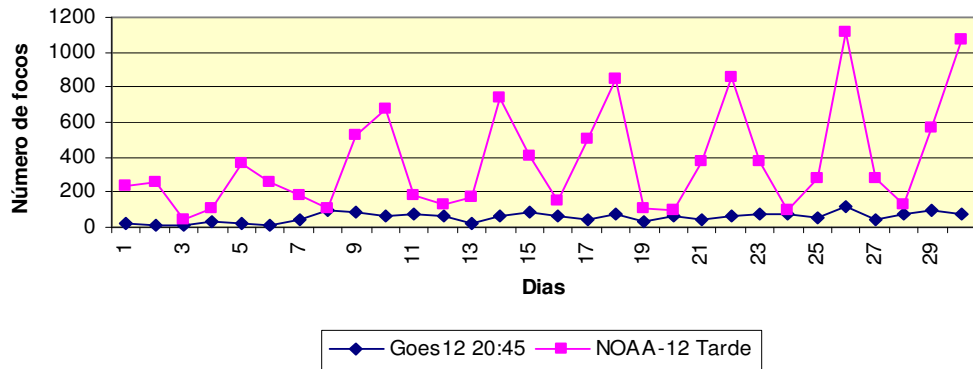
Comparação de queimadas no Mato Grosso entre GOES-12 e MMODIS



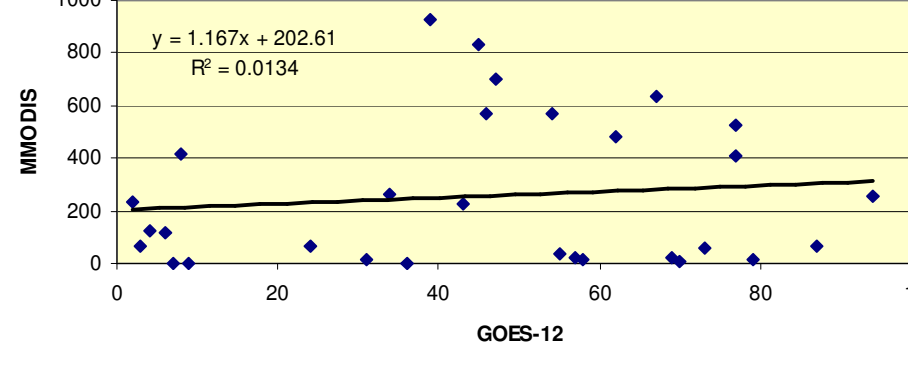
Comparação de queimadas no Mato Grosso entre GOES-12 e MMODIS



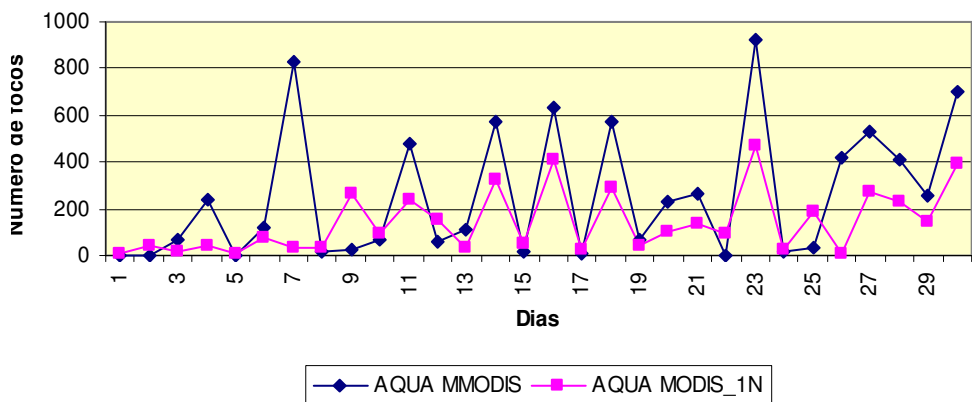
Comparação de queimadas no Mato Grosso entre GOES-12 e NOAA-12



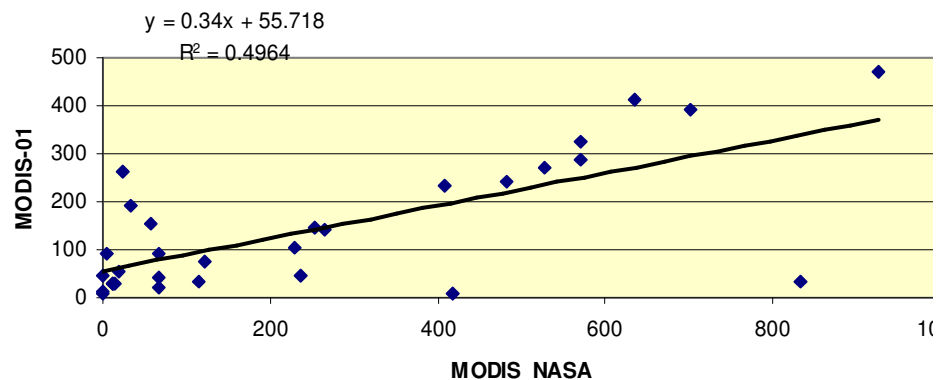
Comparação de queimadas no Mato Grosso entre GOES-12 e MMODIS



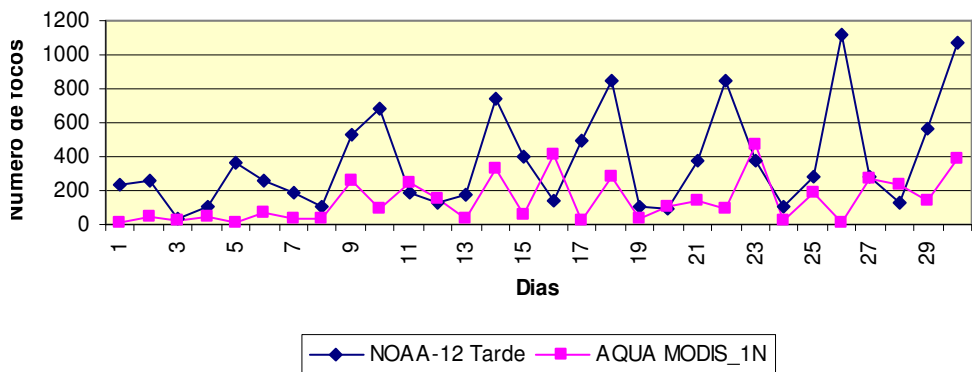
Comparação de focos no Mato Grosso, MODIS-01 e MODIS_NASA



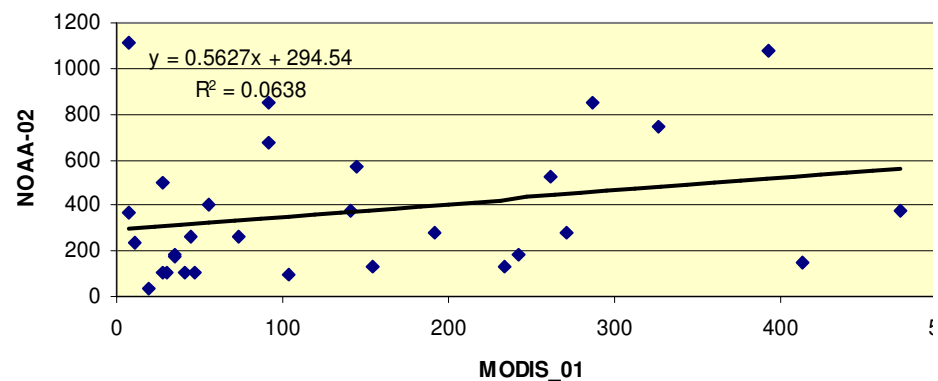
Comparação de focos no Mato Grosso, MODIS-01 e MODIS_NASA



Comparação de focos no Mato Grosso, MODIS-01 e NOAA-12



Comparação de focos no Mato Grosso, MODIS-01 e NOAA-12



Esclarecer dúvidas com o autor, Alberto Setzer asetzer@cptec.inpe.br